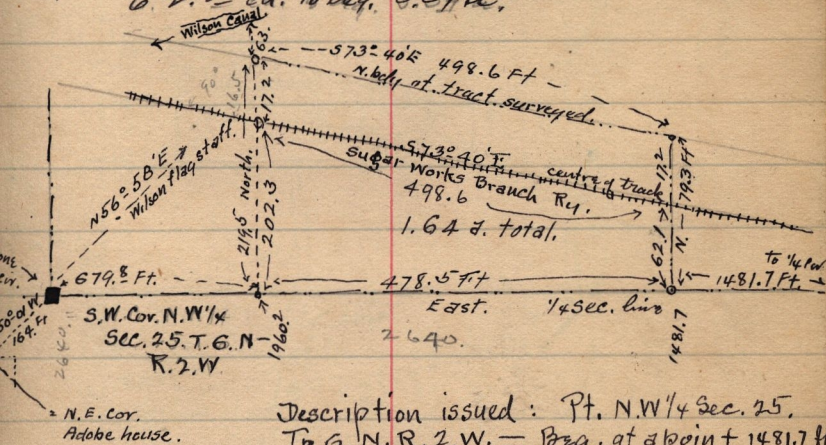


May 6-1898.
T. J. Wilson

J-30, - Thos^s J. Wilson Adm. to Thos^s J. Wilson,
Pt. N. W. $\frac{1}{4}$ Sec. 25. T. 6. N. - R. 2. W. - Beg. 4.09 ch.
W. of S. E. Cor. sd. $\frac{1}{4}$ Sec. N. 5. 9^o ch. N. 82 $\frac{1}{2}$ ^o E. 4. 11
ch. N. 4. ⁵⁰ ch. W. 10. ⁵⁰ ch. S 10. 95 ch. E. 6. 41 ch. to
beg. 9. 7. Also Beg. 20. 10 ch W. of S. E. cor. sd. $\frac{1}{4}$.
W. 9. 60 ch. N. 30. ⁵⁰ ch. N. 4^o W. 9. ⁵³ ch. E. 10. ²⁶ ch.
S 40. ch. to beg. 38. 71 a. in all. 47. 71 a.

P. 46. W^m Wilson to Thos^s J. Wilson,
Beg. 22. 45 ch. W. of S. E. Cor. N. W. $\frac{1}{4}$ Sec. 25.
T. 6. N. - R. 2. W. - M. 24. ⁵⁰ ch. W. 2. 20 ch. S 24. ⁵⁰ ch.
E. 2. 20 ch. to beg. 5. 39 a.



Description issued: Pt. N. W. $\frac{1}{4}$ Sec. 25.
T. 6. N. R. 2. W. - Beg. at a point 1481.7 ft
W. of S. E. cor. sd. $\frac{1}{4}$ Sec. - Thence W. 478.5
ft. N. 219.5 ft. to a pt. 16.5 ft. N. at Right A.
from centre of Ry. - thence S 73° 40' E.
498.6 ft. par. to cent. of said Railway.
to pt. N. of beg. 579.3 ft. to beg. 1.64 a.
to be conveyed by Thos^s J. Wilson
to D & R. G. Ry. Co. May 6-1898.